



# Instruction battery change

for LEUCHTIE® Plus Easy Charge / Premium Easy Charge / Pro Easy Charge



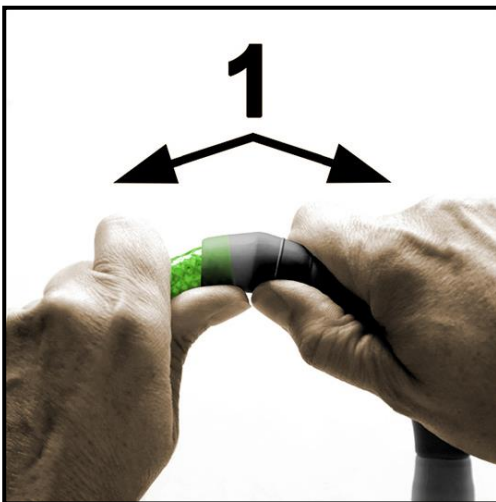
Please make sure that you have the correct batteries for your LEUCHTIE. Mixing them up will result in malfunction and greatly reduced battery life.

LEUCHTIE model	Size label	Battery type
LEUCHTIE Plus Easy Charge	white	Nickel zinc batteries (NiZn) 1,6 V
LEUCHTIE Premium Easy Charge	black	Nickel metal hydride batteries (NiMH) 1,2 V
LEUCHTIE Pro Easy Charge	white, designation Pro	Nickel metal hydride batteries (NiMH) 1,2 V

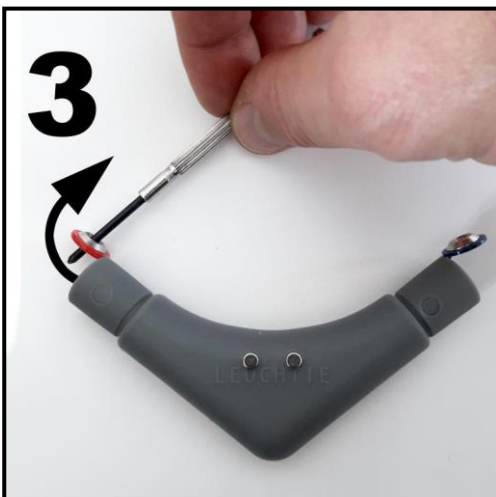
## Removing the batteries

Detach the tube from the battery pack on both sides with slight kinking movements.

1. Pull both silicone sleeves off the battery pack.

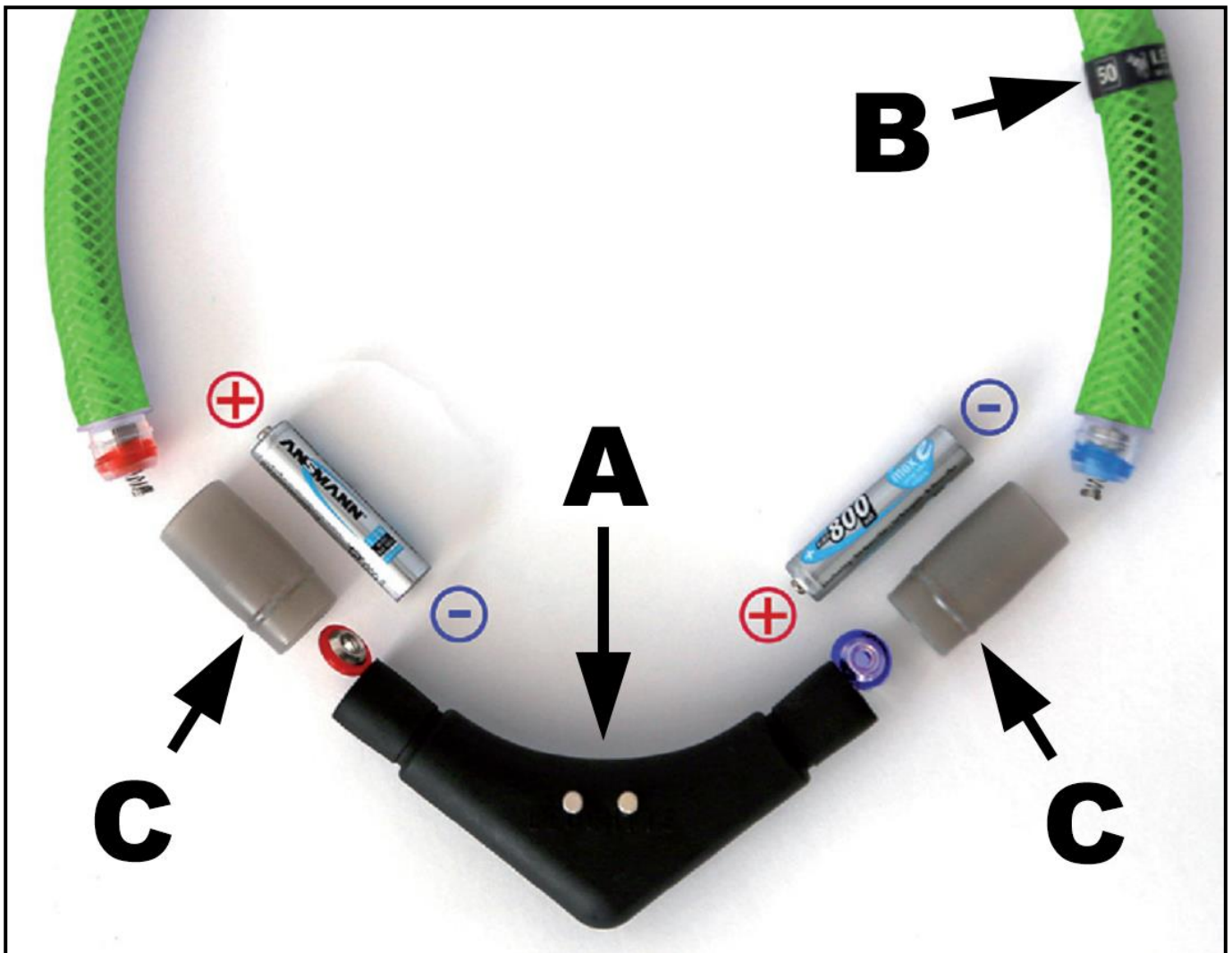


2. Bend the battery contacts carefully using a pointed object (e.g. a small screwdriver or toothpick) until the batteries are exposed.
3. Tap both sides of the battery pack one after the other on a table or against your hand until both batteries fall out.



## Inserting new batteries

4. The charging contacts (A) of the battery pack point upwards, the label on the tube (B) is on the right side.



There are **red** and **blue** markings in both the sockets of the tube and in the contact plates of the battery section.

Insert the new rechargeable batteries into the battery pack as shown in the picture:

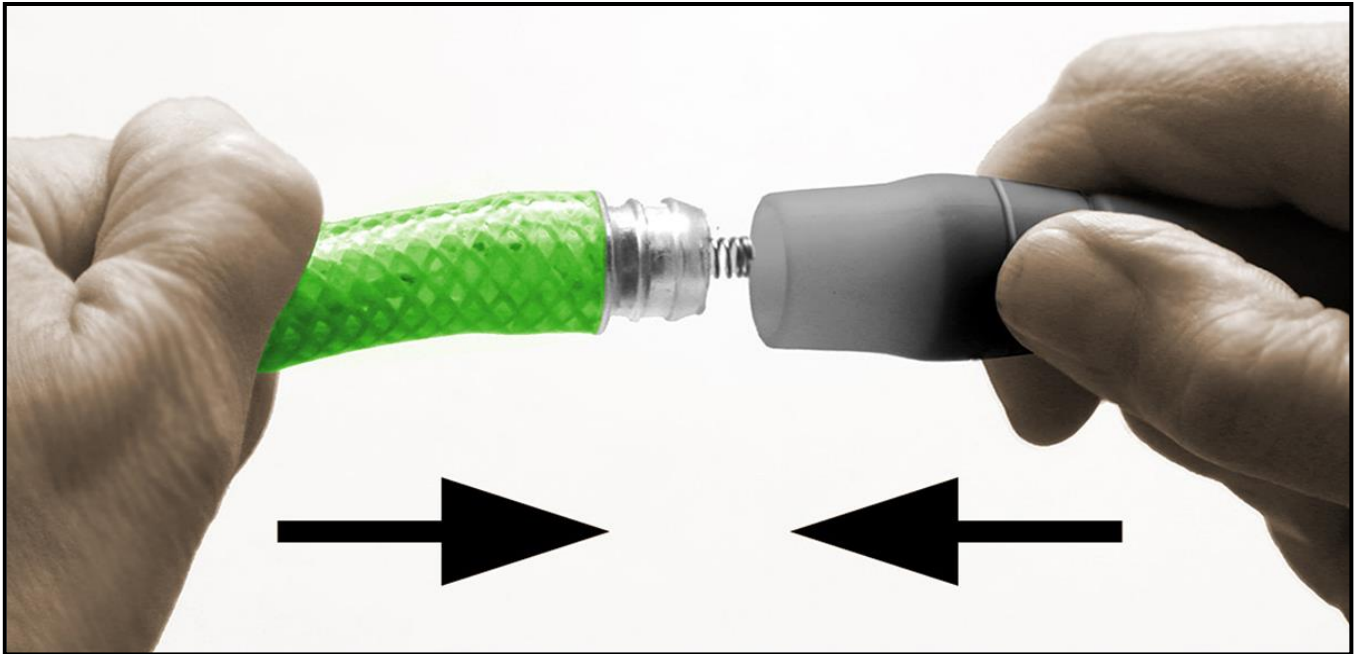
**red side** = contact with the **positive pole** of the battery

**blue side** = contact with the **negative pole** of the other battery

5. Press the two contact pads with the flat side back into the battery pack onto the battery poles.
6. Put both silicone sleeves back on the battery pack. The ring marking of the sleeves (C) points to the battery pack.
7. Connect the tube and the battery pack as follows:
  - the **red** marked end of the tube onto the **red** contact pad / **positive terminal** of the battery
  - the **blue** marked end of the tube onto the **blue** contact pad / **negative terminal** of the other battery

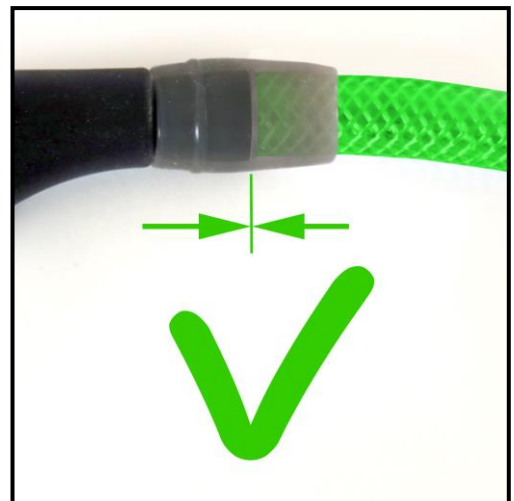
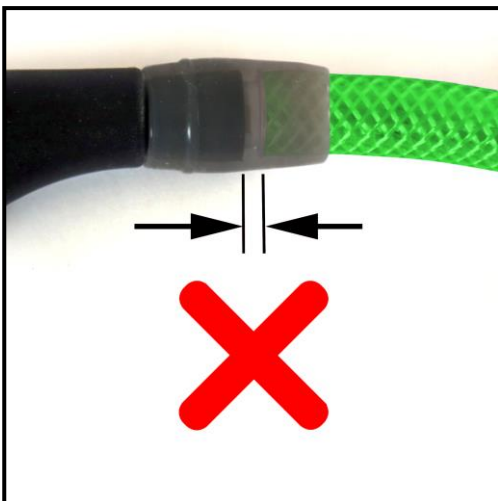
## Attaching the battery pack

8. Insert both ends of the tube one after the other **straight** into the battery pack. Be careful not to bend the contact springs.



Press the battery pack and the tube firmly together on both sides as far as it can go, until they are closed properly.

**IMPORTANT:** There must be no gap between the battery pack and the tube:



Your LEUCHTIE should now switch on as soon as the battery pack is pointing downwards.

If not, please check again that the tube and battery pack have been plugged together as shown on page 1 and whether the contact springs are possibly bent.

For further error messages and important information about the charging function and correct operation, please refer to your Easy-Charge manual or under [FAQ or tips](#).

If you have any questions, we will be happy to help you with advice and support:

E-Mail: [info@leuchtie.de](mailto:info@leuchtie.de)  
Phone: +49 961 – 470 84 40.