

LEUCHTIE® Plus Easy Charge

with USB charging station – directly rechargeable



Please read and observe the following safety instructions to have as much pleasure in your new LEUCHTIE as possible. Please keep this document in a safe place.

Page 1: Activation

Page 2: Recharging the batteries

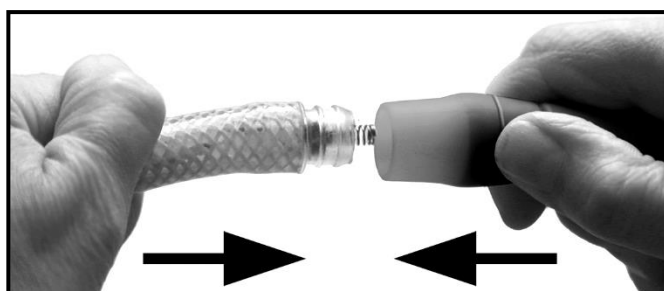
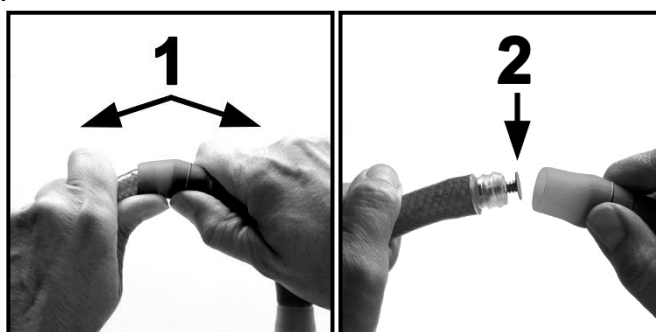
Page 3: Troubleshooting

Page 4: Safety information

Activation process

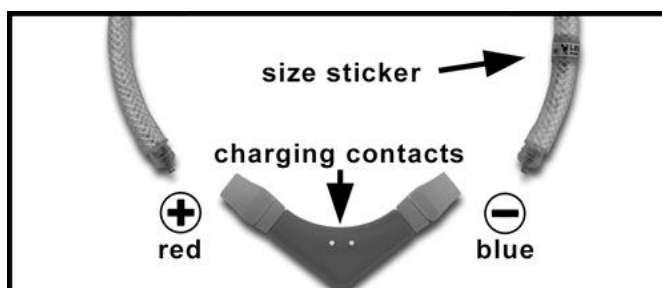
Before using the LEUCHTIE for the first time please remove the transport protection (insulation cap). It is located at the **opposite** side of the size sticker.

- Separate the silicon tube from the battery part by pulling them apart with a slight angular movement (1).
- In doing so, retain the silicon tube close to the battery part.
- Remove the red insulation cap (2).
- Insert the tube straight into the battery part and firmly press them together as far as it can go.



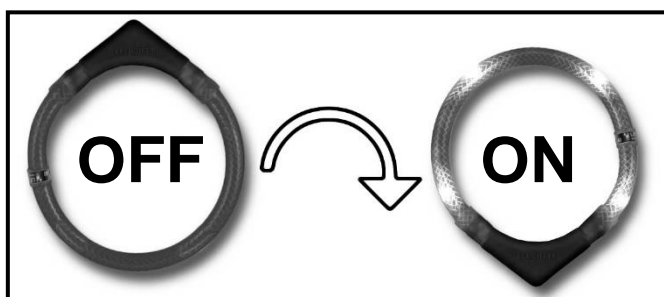
The batteries need to be charged before using the LEUCHTIE for the first time! (see page 2).

In case you opened the battery part on both sides, please keep in mind that you need to reinsert the two poles correctly as seen in the image to the right: with the charging contacts facing up, the end of the tube marked with the size sticker is inserted on the right. This side is the negative pole and can be identified by the blue ring inside the battery part. The left side is the positive pole (red ring inside the battery part). Insert the end of the tube without sticker here.



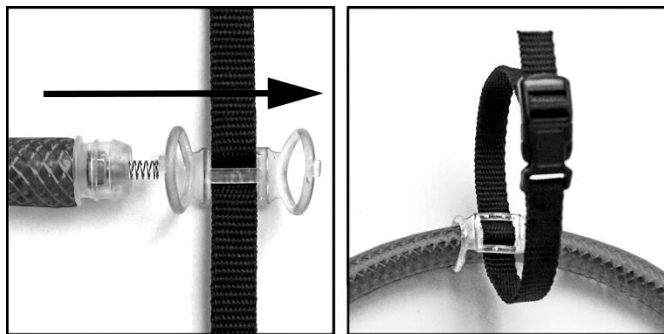
Turning the LEUCHTIE on and off

Simply slip the LEUCHTIE over the dog's head and it will turn on automatically thanks to a sensor as soon as the battery part is facing downwards. When the battery part faces upwards the LEUCHTIE will turn off after approximately one minute. Therefore, suspend the LEUCHTIE e.g. on a hook for storage.



Fixation loop

To attach the LEUCHTIE to a collar or harness with the enclosed fixation loop, pull the open end of the tube through both transparent rubber rings of the fixation loop (see image).



Recharging the batteries

Connect the USB cable of the charging adapter to a USB power source (e.g. USB power supply unit or USB socket of a car, PC, laptop, power bank etc.). The green LEDs of the charging adapter indicate that it is ready for use.

Place the charging contacts of the LEUCHTIE on the charging adapter as seen on the picture to the right. The magnetic charging contacts will automatically align. The red LED shows that the batteries are recharging.

The batteries are charged sufficiently as soon as the green LED starts to light up in addition to the red LED. Depending on the charging level it can take up to 8 hours to recharge the batteries.



Important notes:

- **Recharge the batteries in due time as soon as the brightness decreases (after approx. 10-15h). If you use the LEUCHTIE for 1-2h each day, you should recharge it once a week over night.**
- **Timely recharging has a very positive effect on the operating life of the batteries! NiZn batteries are not affected by the memory effect; frequent recharging will not damage them. Additionally, your LEUCHTIE will thereby keep its maximum light intensity.**
- **If you will not use the LEUCHTIE for a longer time (e.g. during summertime), please fully recharge the batteries before taking it out of operation. With fully charged batteries you can store the LEUCHTIE for 1 year without problems and without needing to recharge it.**
- **The charging contacts of the battery part only conduct electricity during the charging process. The contacts can thus be short-circuited or held under water without creating any danger for dogs or humans. The battery part is of course 100% waterproof.**
- **The contacts of the charging station are also permanently secured against short-circuits. In case of a short circuit the red LED will start to blink – please fix the cause of the short circuit to avoid unnecessary power consumption.**

The integrated NiZn batteries can be replaced if necessary. You can find suitable spare batteries and detailed instructions for the exchange at www.leuchtie.de.



Only identical NiZn batteries with 1,8V cell voltage can be used. Nickel-metal hydride batteries are not suited, because they only provide 1,2V cell voltage and would be damaged by the charging process.

Malfunctions und Remedies

(Detailed tips at www.leuchtie.de, service section)

In case your LEUCHTIE is not functioning properly, please check the following points:

Malfunction	Potential Cause	Remedy
Loose contact in the LEUCHTIE	The battery part and the illuminants are poorly connected	Check whether the tube and the battery part are fully connected (the transparent plastic sleeve needs to be completely inserted into the battery part). Check whether the contact springs are touching the batteries in a straight way or whether they are bent. Apply some contact spray to the battery poles.
The LEUCHTIE is not working	The battery part and the illuminants are not connected correctly	Firmly press both parts together as far as it can go. (see picture on page 1).
Low intensity of light	The batteries are not charged	Recharge the batteries (red LED) for a few hours until the green LED lights up.
Charging process is not successful	The charging contacts are dirty	Check / Clean the magnetic contacts. Metal parts sticking to the magnets can be removed easily using adhesive tape.
	The batteries are defective	Replace the batteries with new ones of the same type (NiZn batteries, 1,8 V cell voltage). Available at www.leuchtie.de

Spare parts

When required, you can obtain spare parts from your retailer or directly from us. (see www.leuchtie.de).

Warranty

Within the framework of the respective legally applicable warranty we will repair all defects, which can be proven to have been caused by material or manufacturing defects. Excluded from this warranty are all defects caused by improper use, non-observance of this manual, leaked batteries and wear from using the product. Further claims are excluded; there will not be any liability for consequential damages. Opening the product (except for battery changes) and other interferences by unauthorized persons will automatically void the warranty.

Repairs or the replacement of parts will not extend the original warranty.

In case of a warranty claim, please contact the retailer from whom you purchased the product.

Manufactured in Germany by:

trends and more GmbH & Co. KG
Hammerweg 123
D- 92637 Weiden
Phone: +49 961 4708440
E-Mail: info@leuchtie.de
WEEE: DE 23706136



Safety information

- Please use the LEUCHTIE only for its designated purpose.
- When putting the collar on the dog for the first time, please pay attention that the LEUCHTIE is not too tight for the dog and that it can be taken off without any problems as well.
- Do not attach a leash to the LEUCHTIE and avoid holding your dog with the LEUCHTIE – the battery part and tube might be pulled apart and small parts (batteries, contact springs) could be lost.
- The LEUCHTIE is not a dog toy!
The LEUCHTIE can be damaged and might open if it is used too heavily (e.g. throwing or vigorous biting). In this case, small parts such as batteries, contact springs etc. can fall out and be lost or even swallowed by the dog, which may lead to serious injuries. If this happens nevertheless, please immediately contact a veterinarian, who can take the appropriate measures if necessary.
- If you notice any defects, do not use the LEUCHTIE.
- Make sure that no humidity gets inside the LEUCHTIE – especially when cleaning it or changing the batteries. The LEUCHTIE is protected against water and humidity very well. Should you nevertheless notice humidity inside the LEUCHTIE, pull the tube and the battery part apart with a slight angular movement (see pictures page 1) and let both parts dry overnight.
- Do not expose the LEUCHTIE to temperatures of more than 60°C.
- Do not dry or heat the LEUCHTIE in the microwave under any circumstances - the microwave radiation would destroy the electronics immediately.
- Do not disassemble, heat or short-circuit the built-in batteries.
- Swallowing the batteries can be fatal! For this reason, please keep both the batteries and the product out of reach of small children (and your dog). In case a battery is swallowed, please seek medical assistance immediately.

Cleaning

Clean the LEUCHTIE with warm water, soap or household cleaners. Do not use any aggressive detergents or detergents containing solvents. When cleaning the LEUCHTIE, pay attention that the silicon seals are closed properly to prevent humidity from entering.

Disposal / Recycling / Labeling



The used batteries cannot be disposed of with the regular household waste! Please dispose of them via the appropriate commercially available containers or drop them off at public collection points (e.g. building yards).



Please protect the environment and recycle this product. The product is labeled with the symbol of the crossed out waste bin, which means that it should be dropped off free of charge at a local collection point for recycling at the end of its useful life. Disposal in the regular waste is not permitted.



This product meets the requirements of the Directive 2011/65/EU of the European Parliament and of the Council of 8 June 2011 on the restriction of the use hazardous substances in electrical and electronic equipment.