



Operating instructions

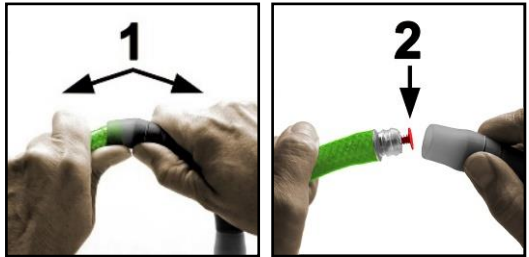
LEUCHTIE® Plus with magnetic sensor for alkaline batteries type AAA/micro

Initial start-up

Before using the LEUCHTIE for the first time please remove the transport protection (insulation cap). It is the red stopper located on the side **without size label** on the light tube.

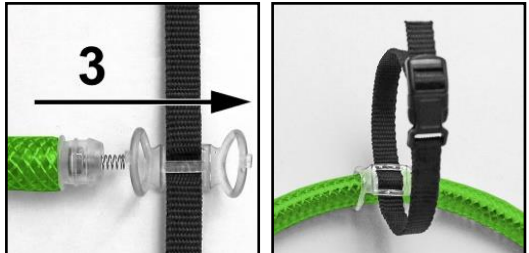
Removing the insulation cap:

1. Separate the tube from the battery pack by pulling them apart with slight angular movements, taking care not to use excessive force (1). In doing so, hold the silicone sleeve onto the battery compartment.
2. Remove the red insulation cap (2) and discard.



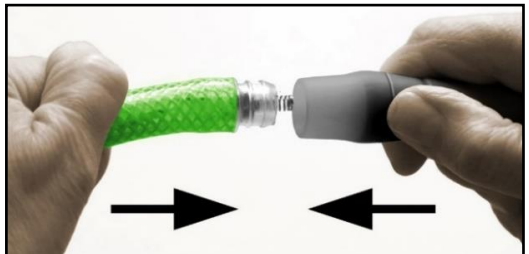
Fix the attachment loop:

3. In order to secure the LEUCHTIE to a collar or harness with the enclosed fixation loop, pull the open end of the tube through both transparent rubber rings of the loop (3).

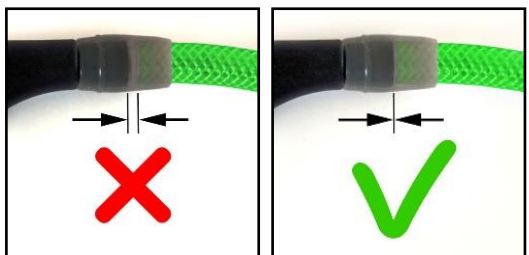


Closing:

4. Insert the end of the tube straight into the battery compartment. Be careful not to bend the contact spring.
5. Press the battery pack and the tube firmly together as far as possible, until they are closed properly.



IMPORTANT: There must be no gap between the battery pack and the tube (see also figures page 3).

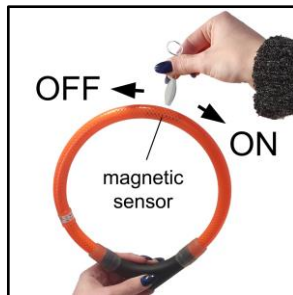


Turning the LEUCHTIE on and off

The magnetic sensor is switched on and off using the supplied magnet. The magnetic sensor is located in the light tube, opposite the tip of the battery compartment. To switch your LEUCHTIE on and off, pass the magnet closely over this point.

Tip:

As an alternative to the supplied magnet, you can use another sufficiently strong magnet, e.g. your mobile phone.



Battery change

- The operating time using 2 alkaline batteries type AAA / Micro is about 100 hours.
- Please use brand alkaline batteries and remove both empty batteries immediately to avoid damage from leaking batteries.
- Please remove both batteries in case of longer disuse (e. g. in the summer).

Replace both batteries immediately if the brightness of the LEDs decreases significantly or if the LEUCHTIE turns off shortly after switching on.

Change the batteries in a dry and clean place and make sure that both the LEUCHTIE and your hands are dry and free of grease.

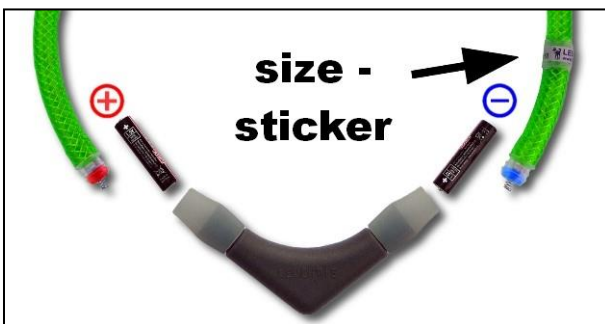
1. Disconnect both ends of the light tube from the battery pack one after the other, as explained in initial start-up on page 1.
2. Remove both empty batteries.
3. Insert 2 new batteries (alkaline type AAA/Micro, no rechargeable batteries) into the battery compartment so that

- on one side the **positive** terminal
- on the other side the **negative** terminal

is visible.

4. There is a **red** and a **blue** marking in the sockets at the ends of the light tube. Connect the light tube with the battery compartment as follows:

- the **red** end of the tube with the **positive** terminal
- the **blue** end of the tube with the **negative** terminal



For correct assembly, follow the procedure for closing the LEUCHTIE described on page 1.

5. Test the function by tilting the LEUCHTIE so that it turns on. If the LEUCHTIE does not work, check the correct position of the batteries and the correct attachment of the battery compartment. Please also note the information on pages 3 and 4.

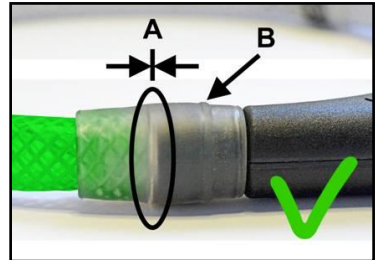
Correct connection of battery compartment and light tube

Please always ensure a correct connection between battery compartment and light tube. Otherwise loose contacts may occur or the connection may even open.

Assemble the LEUCHTIE correctly:

The silicone sleeves are located on both sides centrally on the transition from battery part to light tube and do not show any defects.

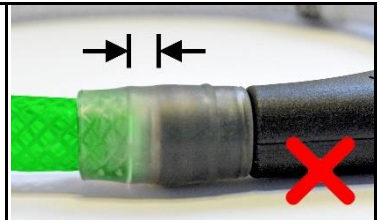
- A) The LEUCHTIE is completely closed up to the stop: there is no gap between the light tube and the battery compartment.
- B) The sleeve end with the annular bead sits on the battery pack on both sides.



Possible sources of error

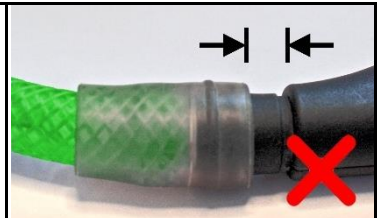
LEUCHTIE is not completely closed:

- The light tube is not completely inserted into the battery compartment:
- A gap can be seen between the light tube and the battery pack.

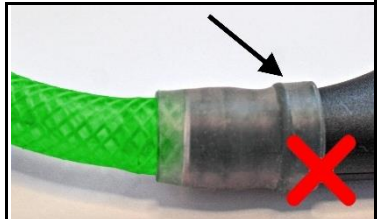


Incorrectly attached silicone sleeves:

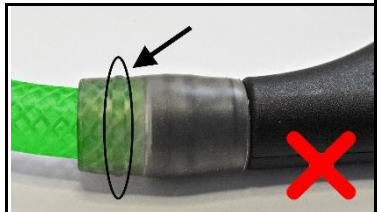
- The sleeve is not pulled all the way to the stop on the battery compartment - it is located too far on the light tube.



- The sleeve is pulled beyond the stop of the battery compartment - it is too far on the battery compartment.



- The sleeve is attached the wrong way round. The sleeve end with the ring bead must be on the battery compartment.



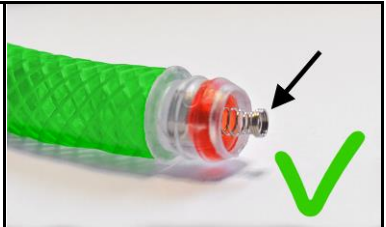
Kinked battery compartment:

- The edge of the battery compartment has been accidentally kinked when the light tube was inserted into the battery compartment.
 - As a result, the light tube cannot be inserted completely into the battery compartment up to the stop.
-
- In comparison, a correctly seated battery compartment with the sleeve attached.



Bent or loose contact springs:

- The springs protruding from the ends of the light tube on both sides must be firmly screwed into the nut and must not be bent or kinked.
- Defective contact springs can be easily replaced if necessary: www.leuchtie.com/faq-spring

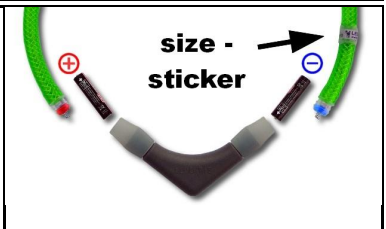


Battery part wrongly plugged in or batteries wrongly inserted

Check the correct position of

- both batteries
- the battery compartment

using the battery change instructions on page 2.



Spare parts & repair service

If required, you can obtain batteries, inexpensive spare parts and useful accessories from your dealer or directly from us:

www.shop.leuchtie.com

If, contrary to expectations, a case of damage occurs which you or your dealer cannot repair, we offer you the possibility of an uncomplicated repair at any time:

www.leuchtie.com/service

Safety information

- Please use the LEUCHTIE only for its designated purpose.
- Do not attach a lead to the LEUCHTIE and avoid holding your dog by the LEUCHTIE. Too much force on the LEUCHTIE could cause the batteries, springs and other parts to fall out and get lost.
- LEUCHTIE is not a toy!
Your LEUCHTIE can be damaged by excessive stress (e.g. by throwing or biting hard) and may open under certain circumstances. Small parts such as batteries, contact springs, etc. can fall out and get lost.
Swallowing small parts can be life-threatening! Therefore, keep both your LEUCHTIE as well as the accessories (e.g. the magnet and the attachment loop) out of the reach of your dog and small children. If parts have been swallowed, medical assistance should be sought immediately.
- Do not use the LEUCHTIE if malfunction or damage is apparent. We accept no liability for any further damage or loss.
- Make sure that no humidity gets inside the LEUCHTIE – especially when cleaning it or changing the batteries. When fully closed, the LEUCHTIE is protected against water and humidity very well. Should you notice humidity inside the LEUCHTIE, pull the tube and the battery pack apart with slight angular movements (see figure page 1) and let both parts dry completely. Avoid temperatures above 50°C.
- Do not dry or heat the LEUCHTIE in the microwave under any circumstances - the microwave radiation would destroy the electronics immediately.
- Do not charge or otherwise reactivate, disassemble, heat or short-circuit the supplied batteries.

Cleaning

Clean the LEUCHTIE in warm water and soap or mild detergent if required. Do not use aggressive or solvent-based cleaners! When cleaning the LEUCHTIE, please ensure that the silicone sleeves are closed properly to prevent humidity from entering.

Warranty

Within the framework of the respective legally applicable warranty we will repair all defects, which can be proven to have been caused by material or manufacturing defects. Excluded from this warranty are all defects caused by improper use, non-observance of this manual, leaked batteries and wear from using the product. Further claims are excluded; there will not be any liability for consequential damages. Opening the product (except for activating and battery changes) and other interferences by unauthorized persons will automatically void the warranty. Repairs or the replacement of parts will not extend the original warranty.

In case of a warranty claim, please contact the retailer from whom you purchased the product.

Manufactured in Germany by:

trends and more GmbH & Co. KG
Hammerweg 123
D-92637 Weiden
Phone: +49 961 4708440
E-Mail: info@leuchtie.de
WEEE: DE 23706136

Disposal / Recycling / Labeling



This product meets the requirements of the Directive 2011/65/EU of the European Parliament and of the Council of 8 June 2011 on the restriction of the use of hazardous substances in electrical and electronic equipment.



Please protect the environment and recycle this product. The product is labeled with the symbol of the crossed out waste bin, which means that it should be dropped off free of charge at a local collection point for recycling at the end of its useful life. Disposal in the regular waste is not permitted.



The used batteries cannot be disposed of with the regular household waste! Please dispose of them via the appropriate commercially available containers or drop them off at public collection points.