



Instruction Manual

LEUCHTIE® Premium Easy Charge

Easily rechargeable via USB charging station

Please read and observe the following safety instructions to enable you to get the most out of your new LEUCHTIE as possible. Please keep this document in a safe place.

Page 1: Activation

Page 2: Recharging the batteries

Page 3: Troubleshooting

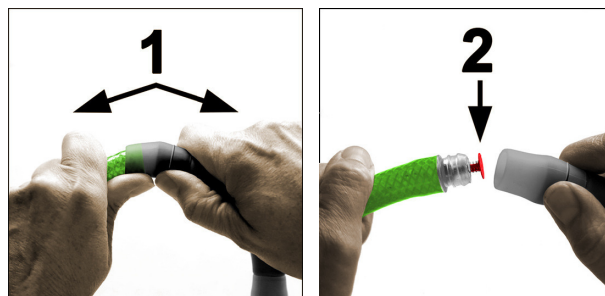
Page 4: Safety information

Activation process

Before using the LEUCHTIE for the first time please remove the transport protection (insulation cap). It is the red stopper located at the **opposite** side of the size sticker.

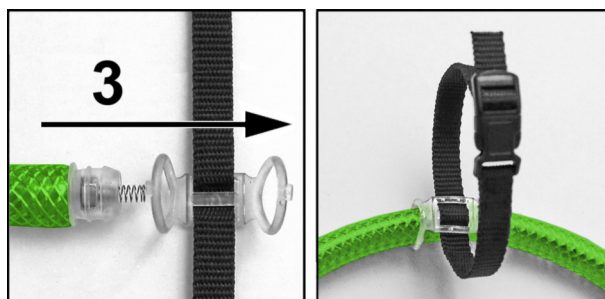
Opening:

1. Separate the tube from the battery pack by pulling them apart with a slight angular movement, taking care not to use excessive force (1). In doing so, hold the silicone sleeve onto the battery pack.
2. Remove the red insulation cap (2) and discard.



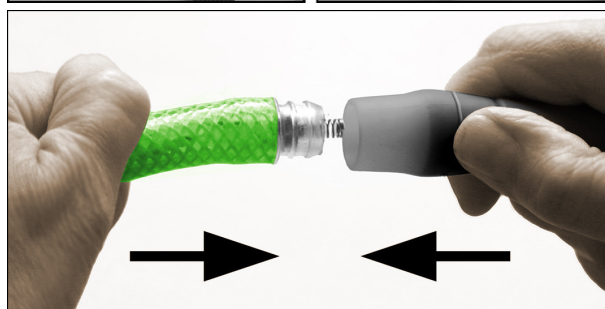
Fix the attachment loop:

3. In order to secure the LEUCHTIE to a collar/harness with the enclosed fixation loop, pull the open end of the tube through both transparent rubber rings of the loop (3).



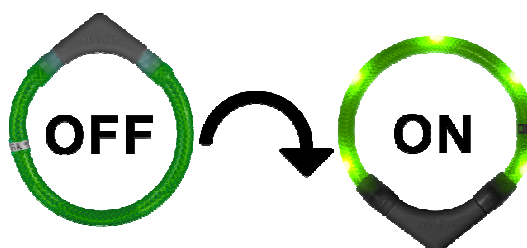
Closing:

4. Insert the tube straight into the battery pack. Make sure that the contact spring at the end of the LED tubing goes in straight and is not bent over in any way.
5. Press tube and battery pack firmly together as far as it can go.



Turning the LEUCHTIE on and off

Simply slip the LEUCHTIE over the dog's head and it will turn on automatically thanks to a sensor as soon as the battery pack is facing downwards. When the battery pack faces upwards the LEUCHTIE will turn off after approx. one minute. Therefore, suspend the LEUCHTIE e.g. on a hook for storage.



Recharging the batteries

The enclosed batteries are pre-charged – the LEUCHTIE is ready for immediate use.

We recommend charging the batteries once a week or after approx. 10 – 15 hours burn time. Just leave it to charge overnight. Please recharge as soon as the LEDs start flashing at the latest, which would happen after approx. 25 hours. This is a built-in warning function to alert you that the battery pack must be recharged immediately.

6. Connect the USB cable of the charging station to a USB power source (e.g. USB power supply unit or USB socket of a car/ PC, etc.). The **green LED** of the charging station indicates that it is ready for use.
7. Place the charging contacts of the LEUCHTIE on to the charging station. The magnetic charging contacts will automatically align. The **red LED** shows that the batteries are recharging.
8. The batteries are charged sufficiently as soon as the **green LED** starts to light up in addition to the **red LED**.



Notices:

- The magnetic charging contacts of the battery pack only conduct electricity during the charging process. The contacts can thus be short-circuited or held under water without creating any danger for dogs or humans. The battery pack is 100% waterproof.
- Please make sure that the battery pack is clean and dry when placing it on the charging station.
- Using the LEUCHTIE before charging is completed (only the red LED of the charging station lights) is possible without any problems. Please place the LEUCHTIE after use on the charging station again until the green LED starts lighting up in addition to the red one.



Important notes for recharging:

- Please use only the provided LEUCHTIE charging station.
- We recommend early recharging:
If you use the LEUCHTIE for 1 – 2 hours each day, you should recharge it once a week or after approx. 10 – 15 hours burn time overnight. This keeps the maximum burn time for the shortest charging time.
- If the LEUCHTIE flashes, it indicates empty batteries. Please recharge immediately when the LEDs start flashing until the green LED of the charging station starts lighting up in addition to the red one. Charging empty batteries can take up to 24 hours.
- If you do not use the LEUCHTIE for a longer time (e.g. during summertime), please fully recharge the batteries before storing.
- The integrated batteries can be replaced if necessary. You can find suitable spare batteries (NiMH batteries, type AAA 1,2 V cell voltage, low self-discharge) at www.leuchtie.de.



Troubleshooting

(detailed tips at www.leuchtie.de, service section)

If your LEUCHTIE is not working correctly, please check the following:

Malfunction	Potential cause	Remedy
Loose contact	Battery pack and tube are poorly connected.	Check whether the battery pack and the tube are fully connected (the transparent plug socket needs to be completely inserted into the battery pack). Check whether the contact springs are touching the batteries in a straight way or whether they are bent. Apply some contact spray (e.g. Contact60) to the battery poles.
Flashing LEDs	Batteries are empty	Recharge immediately via USB charging station, until the green LED lights up in addition to the red one.
LEUCHTIE is not working	Battery pack and tube are not connected correctly	Firmly press both parts together as far as it can go (see figure page 1).
	Batteries are empty	Recharge immediately via USB charging station, until the green LED lights up in addition to the red one.
Charging process is not successful	Charging contacts are dirty	Check / Clean the magnetic contacts. Metal parts sticking to the magnets can be removed easily using adhesive tape.
	Battery pack and tube are not connected correctly	Check whether the battery pack and the tube are fully connected (the transparent plug socket needs to be completely inserted into the battery pack).
	Batteries are defective	Replace the batteries with new ones of the same type (NiMH batteries, type AAA 1,2 V cell voltage, low self-discharge). Available at www.leuchtie.de

Spare parts

When required, you can obtain spare parts from your retailer or directly from us.

Warranty

Within the framework of the respective legally applicable warranty we will repair all defects, which can be proven to have been caused by material or manufacturing defects. Excluded from this warranty are all defects caused by improper use, non-observance of this manual, leaked batteries and wear from using the product. Further claims are excluded; there will not be any liability for consequential damages. Opening the product (except for activating and battery changes) and other interferences by unauthorized persons will automatically void the warranty. Repairs or the replacement of parts will not extend the original warranty.

In case of a warranty claim, please contact the retailer from whom you purchased the product.

Manufactured in Germany by:

trends and more GmbH
Hammerweg 123
D- 92637 Weiden

UST-ID:
WEEE:

Tel. (+49) (0) 961 470 8 474
E-Mail: info@leuchtie.de
URL: www.leuchtie.de

DE 265028845
DE 23706136



Safety information

- Please use the LEUCHTIE only for its designated purpose.
- Do not attach a lead to the LEUCHTIE and avoid holding your dog by the LEUCHTIE. Too much force on the LEUCHTIE could cause the battery and other parts to fall out and get lost.
- LEUCHTIE is not a dog toy!
The LEUCHTIE can be damaged and might open if it is used too heavily (e.g. throwing or vigorous biting). In this case, small parts such as batteries, contact springs, etc. can fall out and be lost or even swallowed by the dog, which may lead to serious injuries. If this happens please immediately contact a veterinarian, who can take the appropriate measures if necessary.
- If you notice any defects, do not use the LEUCHTIE.
- Make sure that no humidity gets inside the LEUCHTIE – especially when cleaning it or changing the batteries. When fully closed, the LEUCHTIE is protected against water and humidity very well. Should you notice humidity inside the LEUCHTIE, pull the tube and the battery pack apart with a slight angular movement (see figures page 1) and let both parts dry overnight.
- Do not expose the LEUCHTIE to temperatures of more than 60 °C.
- Do not dry or heat the LEUCHTIE in the microwave under any circumstances - the microwave radiation would destroy the electronics immediately.
- In order to achieve the best results please recharge at room temperature (5 – 25 °C).
- Do not disassemble, heat or short-circuit the built-in batteries.
- Swallowing the batteries can be fatal! For this reason, please keep both the batteries and the product out of reach of small children (and your dog). In case a battery is swallowed, please seek medical/veterinary assistance immediately.

Cleaning

Clean the LEUCHTIE in warm water and soap or mild detergent if required. Do not use aggressive or solvent-based cleaners! When cleaning the LEUCHTIE, please ensure that the silicone sleeves are closed properly to prevent humidity from entering.

Disposal / Recycling / Labeling



Please protect the environment and recycle this product. The product is labeled with the symbol of the crossed out waste bin, which means that it should be dropped off free of charge at a local collection point for recycling at the end of its useful life. Disposal in the regular waste is not permitted.



The used batteries cannot be disposed of with the regular household waste! Please dispose of them via the appropriate commercially available containers or drop them off at public collection points.



This product meets the requirements of the Directive 2011/65/EU of the European Parliament and of the Council of 8 June 2011 on the restriction of the use of hazardous substances in electrical and electronic equipment.