

LEUCHTIE® Premium

with step-up technology for extreme and constant brightness



Please read and observe the following safety instructions to have as much pleasure in your new LEUCHTIE as possible. Please keep this document in a safe place.

Page 1: First activation

Page 2: Battery change

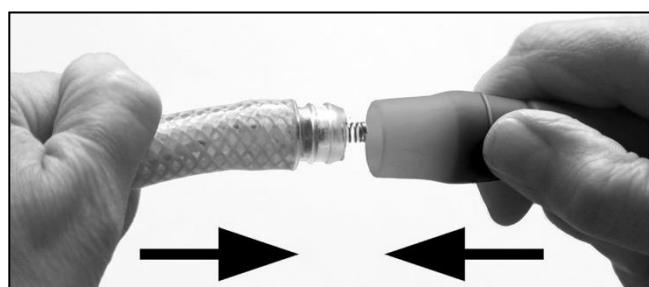
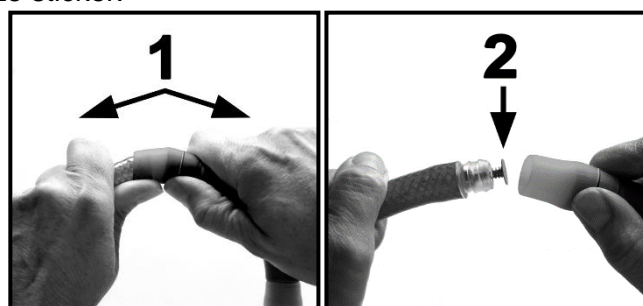
Page 3: Troubleshooting

Page 4: Safety information

Activation process

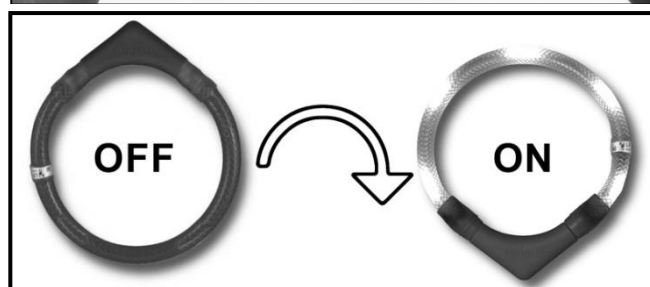
Before using the LEUCHTIE for the first time please remove the transport protection (insulation cap). It is the red stopper located at the **opposite** side of the size sticker.

- Separate the tube from the battery compartment by pulling them apart with a slight angular movement, taking care not to use excessive force (1).
- In doing so, hold the silicon sleeve onto the battery compartment.
- Remove the red insulation cap (2) and discard.
- Insert the tube straight into the battery compartment and firmly press them together as far as it can go. Check if the contact springs aren't tipped over and are pressing straight on the batteries.



Switching on and off

Simply slip the LEUCHTIE over the dog's head and it will turn on automatically thanks to a sensor as soon as the battery part is facing downwards. When the battery part faces upwards the LEUCHTIE will turn off after approximately one minute. Therefore, suspend the LEUCHTIE e.g. on a hook for storage.



Battery change

When the LEDs start to flash, the batteries are used and **both** empty Alkaline batteries or rechargeable batteries (type NiMH) need to be removed immediately!

Please see page 2 for the detailed instructions.

We recommend the use of Alkaline batteries or rechargeable batteries type NiMH.





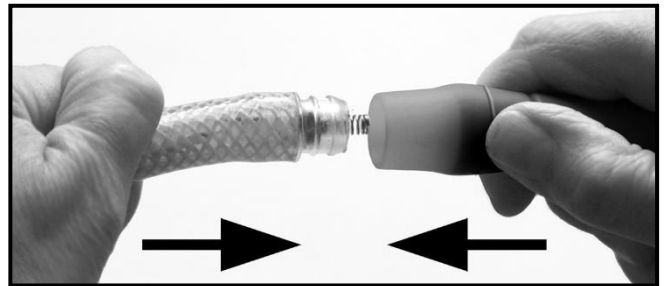
Battery change

When the LEDs start to flash, the batteries are used and both empty Alkaline batteries / rechargeable batteries (type NiMH) need to be removed immediately!

- LEUCHTIE Premium can function on rechargeable batteries, but is delivered with Alkaline batteries which aren't rechargeable.
- The operating time using 2 Alkaline batteries type AAA / Micro is approx 20 hours. Using rechargeable batteries the operating time depends on their capacity. Charging the rechargeable batteries early will have a positive effect on their operating life.
- Please remove both batteries in case of longer disuse (e. g. in the summer).

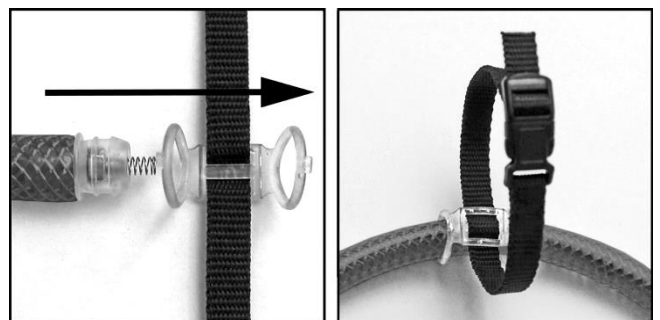
Please ensure to carry out the battery change in a dry and clean environment. Your hands and the LEUCHTIE should be grease-free.

1. Pull both sides of the tube (one after another) by some slightly bending movements off, while holding the silicon sleeve onto the battery compartment (see figure page 1).
2. Remove both the old batteries.
3. Place the new batteries (**Alkaline Type AAA/Micro or rechargeable batteries**) into the compartment while observing the correct polarity as per illustration.
4. Reassemble the tube and the battery compartment as follows: Connect the negative end of the pack (blue) to the side with the label ring on it, the positive end (red) to the other side. Mind not to bend the protruding contacts out of shape in the process! They should press on the batteries centered.
5. Insert the tube straight into the battery compartment and firmly press them together as far as it can go. Check if the LEUCHTIE is working by pointing the battery compartment down.
6. If LEUCHTIE is not working, please read information on page 3.



Attachment loop

In order to secure the LEUCHTIE to a collar/harness with the enclosed fixation loop, pull the open end of the tube through both transparent rubber rings of the loop (see figure).





Malfunctions und Remedies

If your LEUCHTIE is not working correctly, please check the following:

Malfunction	Potential cause	Remedy
Loose contact	The batteries and the tube are poorly connected.	Check whether the battery compartment and the tube are fully connected (the transparent plug socket needs to be completely inserted into the battery compartment). Check whether the contact springs are touching the batteries in a straight way or whether they are bent. Apply some contact spray (e.g. Contact60) to the battery poles.
LEUCHTIE is not working	The battery part and the illuminants are not connected correctly.	Firmly press both parts together as far as it can go. (see figure page 1).
	Batteries are inserted incorrectly	Fill in the batteries correctly - see battery change (page 2).
	The battery part was put on the wrong way.	Separate the tube from the battery part by pulling them apart with a slight angular movement, taking care not to use excessive force and put it on reversely.
	Batteries are consumed - your LEUCHTIE may have been stored incorrectly and remained lit for an extended period.	Both batteries need immediate replacing – see battery change (page 2) Replace flat or weak batteries to avoid battery leaks!

Spare parts

When required, you can obtain spare parts from your retailer or directly from us (see www.leuchtie.de).

Warranty

Within the framework of the respective legally applicable warranty we will repair all defects, which can be proven to have been caused by material or manufacturing defects. Excluded from this warranty are all defects caused by improper use, non-observance of this manual, leaked batteries and wear from using the product. Further claims are excluded; there will not be any liability for consequential damages. Opening the product (except for battery changes) and other interferences by unauthorized persons will automatically void the warranty. Repairs or the replacement of parts will not extend the original warranty.

In case of a warranty claim, please contact the retailer from whom you purchased the product.

Manufactured in Germany by:

trends and more GmbH
Hammerweg 107
D- 92637 Weiden

Tel. +49 961 470 8 440
URL: www.leuchtie.de
E-Mail: info@leuchtie.de

UST-ID:
WEEE:

DE 265028845
DE 23706136



Safety information

- Please use the LEUCHTIE only for its designated purpose.
- When putting the collar on the dog for the first time, please pay attention that the LEUCHTIE is not too tight for the dog and that it can be taken off without any problems as well.
- Do not attach a lead to the LEUCHTIE and avoid holding your dog by the LEUCHTIE. Too much force on the LEUCHTIE could cause the battery and other parts to fall out and get lost.
- The LEUCHTIE is not a dog toy! It can be damaged and might open if it is used too heavily (e.g. throwing or vigorous biting). In this case, small parts such as batteries, contact springs etc. can fall out and be lost or even swallowed by the dog, which may lead to serious injuries. If this happens nevertheless, please immediately contact a veterinarian, who can take the appropriate measures if necessary.
- If you notice any defects, do not use the LEUCHTIE.
- Make sure that no humidity gets inside the LEUCHTIE – especially when cleaning it or changing the batteries. When fully closed, the LEUCHTIE is protected against water and humidity very well. Should you nevertheless notice humidity inside the LEUCHTIE, pull the tube and the battery compartment apart with a slight angular movement (see pictures page 1) and let both parts dry overnight.
- Do not expose the LEUCHTIE to temperatures of more than 60°C.
- Do not dry or heat the LEUCHTIE in the microwave under any circumstances - the microwave radiation would destroy the electronics immediately.
- Do not recharge, disassemble, heat or short-circuit the batteries provided.
- Swallowing the batteries can be fatal! For this reason, please keep both the batteries and the product out of reach of small children (and your dog). In case a battery is swallowed, please seek medical assistance immediately.

Cleaning

Clean the LEUCHTIE in warm water and soap or mild detergent if required. Do not use aggressive or solvent-based cleaners! Be careful to avoid moisture getting into the battery compartment. If this happens accidentally, pull the tube and the battery compartment apart by slightly bending movements (see figure page 1) and let both parts dry overnight.



The used batteries cannot be disposed of with the regular household waste! Please dispose them via the appropriate commercially available containers or drop them off at public collection points (e.g. building yards).



Please protect the environment and recycle this product. The product is labeled with the symbol of the crossed out waste bin, which means that it should be dropped off free of charge at a local collection point for recycling at the end of its useful life. Disposal in the regular waste is not permitted.



This product meets the requirements of the Directive 2011/65/EU of the European Parliament and of the Council of 8 June 2011 on the restriction of the use hazardous substances in electrical and electronic equipment.